

LP-16 Data Sheet

M16 Power + Signal	Product Series	LP-16																
	Pin Number	2PIN		3PIN		4PIN		5PIN		6PIN	7PIN		8PIN		9PIN		RJ45	FIBER
	Section diagram	PIN 	Mounting 	PIN 	Mounting 	PIN 	Mounting 	PIN 	Mounting 	—	PIN 	Mounting 	PIN 	Mounting 	PIN 	Mounting 		
	Current Rating	10A						5A						—				
	Voltage Rating	AC 400V						AC 250V						—				
	Cable range	Ø3.0~Ø9.0mm										—						
	Wire Gauge	1.0~1.5mm ² /18 -16AWG						0.34~0.75mm ² /22 - 20AWG						—				
	IP Protection Class (Mated)	IP67 (Mated)										—						
	Termination	Soldering										—						
Product Picture	material	Part Number (The bold font is a best-sell products)																
Cable connector	plastic	Male	LP-16-C02PE-02-001	LP-16-C03PE-02-001	LP-16-C04PE-02-001	LP-16-C05PE-02-001	—	LP-16-C07PE-02-001	LP-16-C08PE-02-001	LP-16-C09PE-02-001	—	—						
		Female	LP-16-J02PE-02-001	LP-16-J03PE-02-001	LP-16-J04PE-02-001	LP-16-J05PE-02-001	—	LP-16-J07PE-02-001	LP-16-J08PE-02-001	LP-16-J09PE-02-001	—	—						
In-line Cable connector		Male	LP-16-C02PP-02-001	LP-16-C03PP-02-001	LP-16-C04PP-02-001	LP-16-C05PP-02-001	—	LP-16-C07PP-02-001	LP-16-C08PP-02-001	LP-16-C09PP-02-001	—	—						
		Female	LP-16-J02PP-02-001	LP-16-J03PP-02-001	LP-16-J04PP-02-001	LP-16-J05PP-02-001	—	LP-16-J07PP-02-001	LP-16-J08PP-02-001	LP-16-J09PP-02-001	—	—						
Flange Mounting		Male	LP-16-C02SX-02-401	LP-16-C03SX-02-401	LP-16-C04SX-02-401	LP-16-C05SX-02-401	—	LP-16-C07SX-02-401	LP-16-C08SX-02-401	LP-16-C09SX-02-401	—	—						
		Female	LP-16-J02SX-02-401	LP-16-J03SX-02-401	LP-16-J04SX-02-401	LP-16-J05SX-02-401	—	LP-16-J07SX-02-401	LP-16-J08SX-02-401	LP-16-J09SX-02-401	—	—						
Panel Mounting Rear Locking		Male	LP-16-C02SX-02-101	LP-16-C03SX-02-101	LP-16-C04SX-02-101	LP-16-C05SX-02-101	—	LP-16-C07SX-02-101	LP-16-C08SX-02-101	LP-16-C09SX-02-101	—	—						
		Female	LP-16-J02SX-02-101	LP-16-J03SX-02-101	LP-16-J04SX-02-101	LP-16-J05SX-02-101	—	LP-16-J07SX-02-101	LP-16-J08SX-02-101	LP-16-J09SX-02-101	—	—						

LP-16 Data Sheet

M16 Power + Signal	Product Series	LP-16																	
	Pin Number	2PIN		3PIN		4PIN		5PIN		6PIN		7PIN		8PIN		9PIN		RJ45	FIBER
	Section diagram	PIN 	Mounting 	PIN 	Mounting 	PIN 	Mounting 	PIN 	Mounting 	—		PIN 	Mounting 	PIN 	Mounting 	PIN 	Mounting 		
	Current Rating	10A						5A						—					
	Voltage Rating	AC 400V						AC 250V						—					
	Cable range	Ø3.0~Ø9.0mm										—							
	Wire Gauge	1.0~1.5mm ² /18 -16AWG						0.34~0.75mm ² /22 -20AWG						—					
	IP Protection Class (Mated)	IP67 (Mated)																	
	Termination	Soldering																	
Product Picture	material	Part Number																	
Cable connector 	Plastic + Metal	Male	LP-16-C02PE-01-001	LP-16-C03PE-01-001	LP-16-C04PE-01-001	LP-16-C05PE-01-001		LP-16-C07PE-01-001	LP-16-C08PE-01-001	LP-16-C09PE-01-001	—	—							
		Female	LP-16-J02PE-01-001	LP-16-J03PE-01-001	LP-16-J04PE-01-001	LP-16-J05PE-01-001		LP-16-J07PE-01-001	LP-16-J08PE-01-001	LP-16-J09PE-01-001	—	—							
RJ45 		Male											LP-16-C/RJ45/015/PE-42-001		—				
		Female											LP-16-J/RJ45/110/PP-02-001 LP-16-J/RJ45/213/PP-42-001		—				
FIBER 		Female											LP-16-C/MTP/016/PE-43-001						
FIBER Panel Mounting 		Male											LP-16-J/MTP/016/SX-43-001						

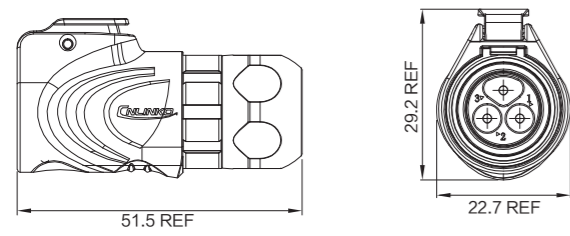
LP-16

LP-16 Data Sheet

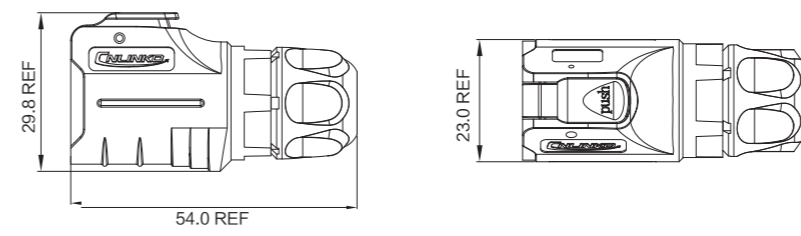
M16 Power + Signal	Product Series	LP-16																
	Pin Number	2PIN		3PIN		4PIN		5PIN		7PIN		8PIN		9PIN		RJ45	FIBER	
	Section diagram	PIN 	Mounting 	PIN 	Mounting 	PIN 	Mounting 	PIN 	Mounting 	—	PIN 	Mounting 	PIN 	Mounting 	PIN 	Mounting 		
	Current Rating	10A						5A						—				
	Voltage Rating	AC 400V						AC 250V						—				
	Cable range	Ø3.0~Ø9.0mm										—						
	Wire Gauge	1.0~1.5mm ² /18-16AWG						0.34~0.75mm ² /22-20AWG						—				
	IP Protection Class (Mated)	IP67 (Mated)										—						
	Termination	Soldering										—						
Product Picture	material	Part Number (The bold font is a best-sell products)																
Cable connector 	Metal	Male	LP-16-C02PE-03-001	LP16-C03PE-03-001	LP-16-C04PE-03-001	LP-16-C05PE-03-001	—	LP-16-C07PE-03-001	LP-16-C08PE-03-001	LP-16-C09PE-03-001	—	—						
		Female	LP-16-J02PE-03-001	LP-16-J03PE-03-001	LP-16-J04PE-03-001	LP-16-J05PE-03-001	—	LP-16-J07PE-03-001	LP-16-J08PE-03-001	LP-16-J09PE-03-001	—	—						
In-line Cable connector 		Male	LP-16-C02PP-01-001	LP-16-C03PP-01-001	LP-16-C04PP-01-001	LP16-C05PP-01-001	—	LP-16-C07PP-01-001	LP-16-C08PP-01-001	LP-16-C09PP-01-001	—	—						
		Female	LP-16-J02PP-01-001	LP-16-J03PP-01-001	LP-16-J04PP-01-001	LP-16-J05PP-01-001	—	LP-16-J07PP-01-001	LP-16-J08PP-01-001	LP-16-J09PP-01-001	—	—						
Flange Mounting 		Male	LP-16-C02SX-03-401	LP-16-C03SX-03-401	LP-16-C04SX-03-401	LP-16-C05SX-03-401	—	LP-16-C07SX-03-401	LP-16-C08SX-03-401	LP-16-C09SX-03-401	—	—						
		Female	LP-16-J02SX-03-401	LP-16-J03SX-03-401	LP-16-J04SX-03-401	LP-16-J05SX-03-401	—	LP-16-J07SX-03-401	LP-16-J08SX-03-401	LP-16-J09SX-03-401	—	—						
Panel Mounting Rear Locking 		Male	LP-16-C02SX-03-101	LP-16-C03SX-03-101	LP-16-C04SX-03-101	LP16-C05SX-03-101	—	LP-16-C07SX-03-101	LP-16-C08SX-03-101	LP-16-C09SX-03-101	—	—						
		Female	LP-16-J02SX-03-101	LP-16-J03SX-03-101	LP-16-J04SX-03-101	LP16-J05SX-03-101	—	LP-16-J07SX-03-101	LP-16-J08SX-03-101	LP-16-J09SX-03-101	—	—						
		Male	LP-16-C/RJ45/015/PE-43-001 LP-16-J/RJ45/110/SX-03-201															
		Female	LP-16-J/RJ45/110/SX-02-201 LP-16-J/RJ45/110/SX-02-202															

LP-16 Appearance Dimension

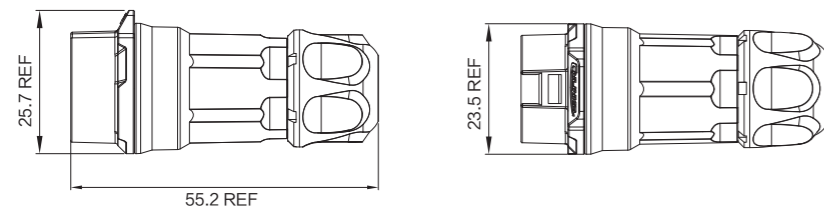
■ Metal Cable Connector



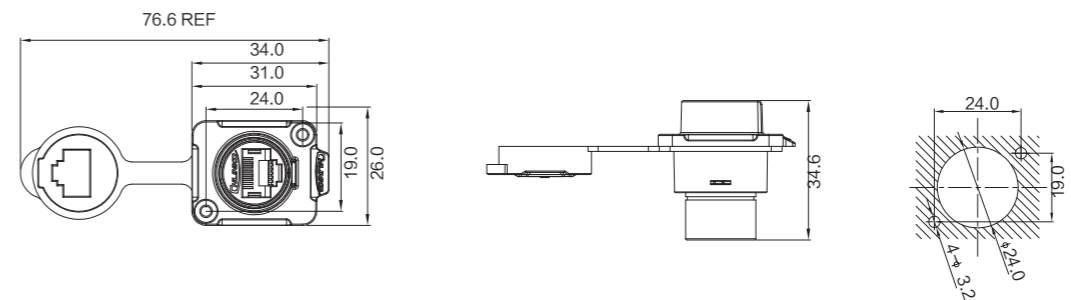
■ Plastic Cable Connector



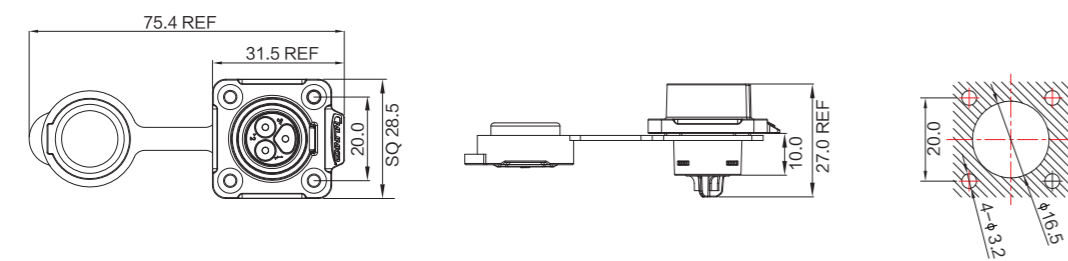
■ In-line Cable Connector



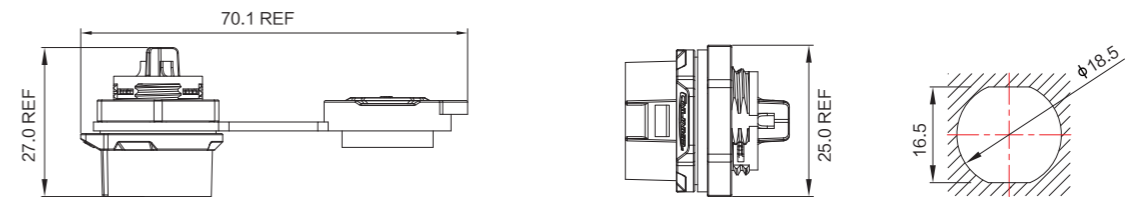
■ 2 Holes Flange Mounting



■ 4 Holes Flange Mounting



■ Panel Mounting Rear Locking



LP-16