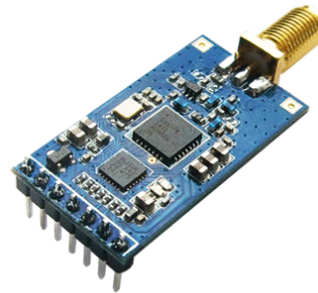

DRF1278DM

LORA Long Range SX1278 Data Radio Modem

V1.00

Features

- LoRa™ Frequency Spectrum
- 433Mhz ISM frequency band
- -136dBm receive sensitivity
- 20dBm Max. output power
- Serial port wake-up
- Wireless wake-up
- Star networking ability
- Supply voltage 3.4~5.5V



Application

- Home automation
- Security alarm
- Telemetry
- Automatic meter reading
- Contactless access
- Wireless data logger
- Remote motor control
- Wireless sensor network

DESCRIPTION

DRF1278DM is a type of long range low data rate data radio modem based on SX1278 from Semtech. DRF1278DM is a low-cost sub-1 GHz transceiver module designed for operations in the unlicensed ISM (Industrial Scientific Medical) and LPRD bands. Frequency spectrum modulation/demodulation, multi-channel operation, high bandwidth efficiency and anti-blocking performance make DRF1278DM modules easy to realize the robust and reliable wireless link.

The module can work in two different modes: Standard mode and Star network mode. In the standard mode DRF1278DM acts as transparent data radio modem which it communicates with the host at the preset data format without encoding / decoding needed. In start network mode, one module will be the configured to the central node and other modules are set to node modules. The communication between the central module and node module are bidirectional but the node modules can not talk with each other.

PIN FUNCTIONS

PIN	DIP-A	Function	Description
1	GND	Ground	Ground (0V)
2	VCC	Power	Power supply
3	EN	Input	Enable pin, Low effective
4	RXD	Input	RXD: UART input, TTL level
5	TXD	Output	TXD: UART output, TTL level
6	AUX	Output	Data indication pin for waking up module
7	SET	---	Reserved

Table 1: DRF1278DM Pin functions

ELECTRICAL SPECIFICATIONS

Symbol	Parameter (condition)	Min.	Typ.	Max.	Units
VCC	Supply Voltage	3.4		5.5	V
Temp	Operating temperature range	-40	25	80	°C
RH	Operating relative humidity	10		90	%
Freq	Frequency range	420		450	MHz
Mod	Modulation type		FS		
IR	Receive current in standard mode		15.2		mA
	Transmit mode @ 20dBm		75		mA
	Sleep mode		3.9		uA
Pout	Maximum output power			20	dBm
Sen	Receiving sensitivity		-136		dBm
DRIN	UART data rate	1.2	9.6	57.6	Kbps
TR ⁽¹⁾	Wireless wake-up time		2		s
ZANT	Antenna Impedance		50		Ohm

Table 2: DRF1278DM Electrical Specifications

ABSOLUTE MAXIMUM RATINGS

Symbol	Parameter	Min.	Max.	Units
VCC	Supply Voltage	-0.3	5.5	V
VI	Input voltage	-0.3	3.3	V
VO	Output voltage	-0.3	3.3	V
TST	Storage temperature	-55	125	°C

Table 3: DRF1278DM Maximum Ratings

WORKING MODE

1. STANDARD MODE

Standard mode is also called transparent mode in which the module receives from or sends data to the host through serial port (UART) at preset data format and users don't need to care about the process of data inside the module. The AUX pin of DRF1278D will give indication about the data IN/OUTt of serial port 2ms in advance in order to wake up the host.

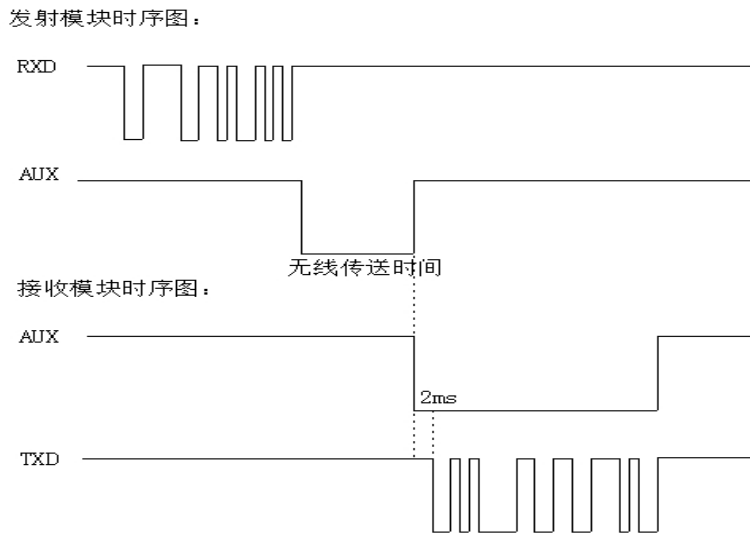


Figure 1: DRF1278DM Timing Sequence

2. STAR NETWORK MODE

In this mode one DRF1278D module needs to set as the central module and other modules should be node modules. For central module, it works at the full performance so its power consumption is the same as in the standard mode. As to node module, some functions of it are closed. If the EN pin is connected to logic high, the node module only keeps CAD wireless monitor to detect if there is any wireless signal coming and will not check if there is any data from the host through UART interface. If the node module sends data to the central module, the host needs to set EN pin to low to activate the node module and then transfers the data.

In the configuration tool, there is an option for Node ID which is used to set the ID of node module. If the ID of the node modules are 0x00 0x00, the node module will not make address detection. In other words all of the nodes will receive the data including address from central module. The data package of the first two bytes should be the node ID.

E.g. The Central module sends data '0x00 0x01 0x22 0x33 0x44 0x55', all of the node modules with ID 0x00 0x00 will receive the data '0x00 0x01 0x22 0x33 0x44 0x55'.

If the ID of node module is larger than 0x00 0x00, the node module with ID the same as the one in the first two bytes of data package can receive the real data.

E.g. The Central module sends data '0x00 0x01 0x22 0x33 0x44 0x55', the module with ID 0x00 0x01 can get the data '0x22 0x33 0x44 0x55' and the first two –byte ID will be filtered.

In order to guarantee the reliability of communication, the length of data package should not exceed 64 bytes.

3. CONFIGURATION

In some situations the default parameters are not optimized for some applications so users might need to change the parameters. There are two ways to adjust them: by MCU or by PC.

By PC: DORJI offers PC based configuration tool which can be used to change the parameters through graphic interface. Users can insert DRF1278DM module into UART-to-USB converter board DAC02 and connect them to computer and run the configuration tool.

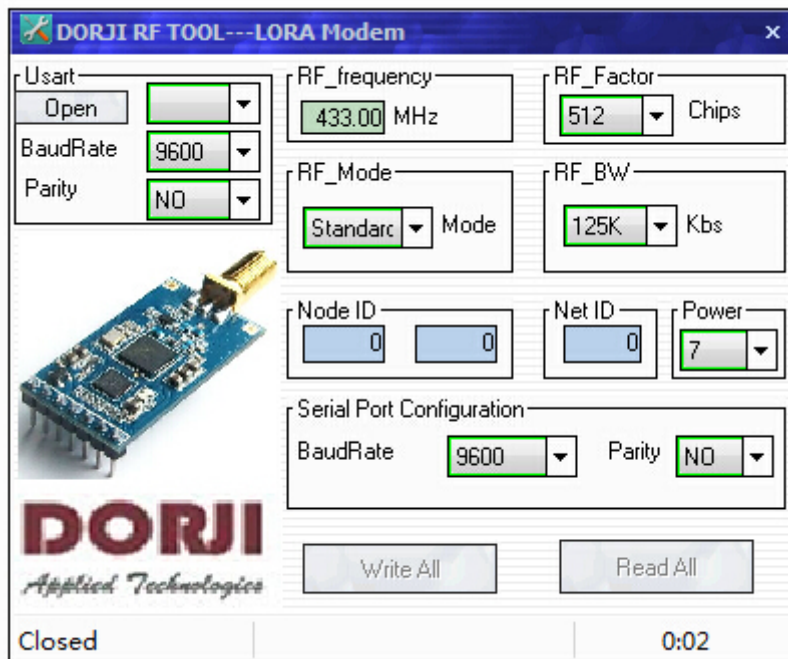


Figure 2: Configuration Tool Interface

Parameter	Description
UART area	The values are fixed at 9.6k bps & no parity check.
RF frequency	It indicates the center frequency of RF carrier
RF mode	Standard mode, central mode and node mode
RF_Factor	Lora spreading factor. Larger value means higher sensitivity but longer air transmission time
RF_BW	Lora bandwidth. Larger value means lower sensitivity. Recommended value:

	125K.
Node ID	It is only used for node modules
Net ID	Only the modules with the same network ID can communicate with each other. It can avoid interferences from irrelative modules
Power	It is used to set the output power of DRF1278D. There are 7 power levels. The 7 means the max. output power---20dBm and 0 means the lowest output power.
Serial baudrate	It defines the data rate between DRF1278D and the host
Serial parity	It defines the parity check between DRF1278D and the host

Table 4: DRF1278DM Parameter Table

Please note that the preconditions for two or modules to communicate are that the frequency, RF factor, RF_BW and Net ID must be the same.

By MCU: Users also can use microcontroller to change the default parameters. The work mechanism is the same as in PC.

Sync word		ID code		Header	Command		Length	Data	CRC	End code	
0xAF	0xAF	0x00	0x00	0xAF	XX	YY	LEN	XXXX	CS	0X0D	0X0A

Table 5: DRF1278DM Command Structure

Notes: 1. The **ID code** is 0x00 0x00 in command.

2. In **command code**, XX in sending command is 0x80 and in response command is 0x00. YY is the command type. The work mode of

YY	TYPE	YY	TYPE	YY	TYPE	YY	TYPE	YY	TYPE
0x01	write	0x02	read	0x03	standard	0x04	Central	0x05	Node

Table 6: Command Type and Value

3. **Length** refers to the data bytes between Length byte and CRC byte which the two bytes are not calculated in the length.

4. **Data** refers to the detailed parameters which need to be changed.

Baudrate	Parity	Frequency	RF_Factor	Mode	RF_BW	ID	NetID	Power
----------	--------	-----------	-----------	------	-------	----	-------	-------

Table 7: Parameter Sequence in Data Section

Parameters	Length	Values
Baudrate	1 byte	1=1200, 2=2400, 3=4800, 4=9600, 5=19200,6=38400, 7=57600
Parity	1 byte	0=no parity check, 1=odd parity, 2=even parity
Frequency	3 bytes	The value=Frequency/61.035. E.g. For 433MHz, the value= 433000000/61.035
RF_Factor	1 byte	7=128, 8=256, 9=512, 10=1024, 1=2048, 12=4096
Mode	1 byte	0=standard, 1=central, 2=node
RF_BW	1 byte	6=62.5k, 7=125k, 8=256k, 9=512k
ID	2 bytes	0x0000 ~ 0xFFFF, high byte first
NetID	1 byte	0x00~0xFF
RF_Power	1 byte	1=4dBm, 2=7dBm, 3=10dBm, 4=13dBm, 5=14dBm, 6=17dBm, 7=20dBm

Table 8: Parameter Length & Value Range

5. CS refers to CRC code which is the remainder of the sum of data section divided by 256

In order to understand the commands, the section will demonstrate the use of commands by some examples.

Write Command Code: 0x01

Command: 0xAF, 0xAF, 0x00, 0x00, 0xAF, 0x80, 0x01, 0x0C, CS, 0x0D, 0x0A

Response.: 0xAF, 0xAF, 0x00, 0x00, 0xAF, 0x00, 0x01, 0x0C, CS, 0x0D, 0x0A

Read Command Code: 0x02

Command: 0xAF, 0xAF, 0x00, 0x00, 0xAF, 0x80, 0x02, 0x0C, CS, 0x0D, 0x0A

Response.: 0xAF, 0xAF, 0x00, 0x00, 0xAF, 0x00, 0x02, 0x0C, CS, 0x0D, 0x0A

Standard Mode Command Code: 0x03

Command: 0xAF, 0xAF, 0x00, 0x00, 0xAF, 0x80, 0x03, 0x02, 0x00, 0x00, 0x92, 0x0D, 0x0A

Response.: 0xAF, 0xAF, 0x00, 0x00, 0xAF, 0x00, 0x03, 0x02, 0x00, 0x00, 0x92, 0x0D, 0x0A

Central Mode Command Code: 0x04

Command: 0xAF, 0xAF, 0x00, 0x00, 0xAF, 0x80, 0x04, 0x02, 0x00, 0x00, 0x93, 0x0D, 0x0A

Response.: 0xAF, 0xAF, 0x00, 0x00, 0xAF, 0x00, 0x04, 0x02, 0x00, 0x00, 0x93, 0x0D, 0x0A

Node Mode Command Code: 0x05

Command: 0xAF, 0xAF, 0x00, 0x00, 0xAF, 0x80, 0x05, 0x02, 0x00, 0x00, 0x94, 0x0D, 0x0A

Response.: 0xAF, 0xAF, 0x00, 0x00, 0xAF, 0x00, 0x05, 0x02, 0x00, 0x00, 0x94, 0x0D, 0x0A

MECHANICAL DATA

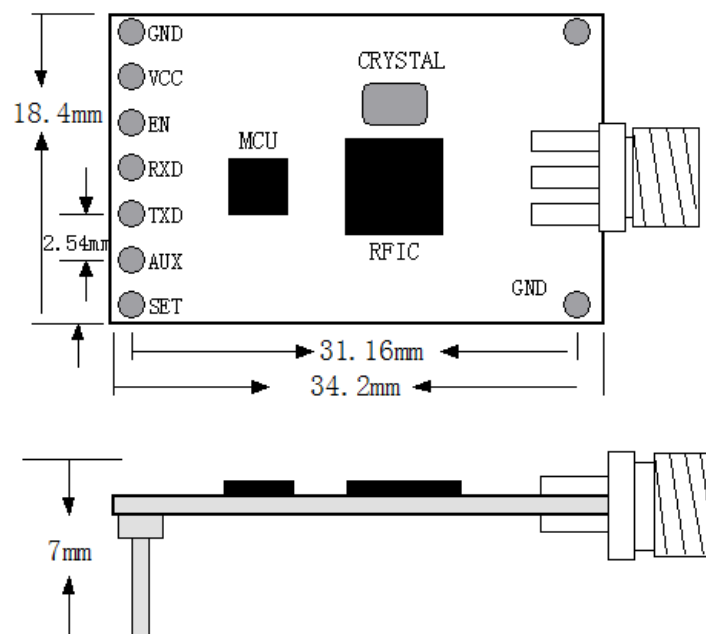


Figure 3: DIP Package

<p>Dorji Applied Technologies A division of <i>Dorji Industrial Group Co., Ltd</i></p> <p>Add.: Xinchenuayuan 2, Dalangnanlu, Longhua, Baoan district, Shenzhen, China 518109</p> <p>Tel: 0086-755-28156122 Fax.: 0086-755-28156133 Email: sales@dorji.com Web: http://www.dorji.com</p>	<p>Dorji Industrial Group Co., Ltd reserves the right to make corrections, modifications, improvements and other changes to its products and services at any time and to discontinue any product or service without notice. Customers are expected to visit websites for getting newest product information before placing orders.</p> <p>These products are not designed for use in life support appliances, devices or other products where malfunction of these products might result in personal injury. Customers using these products in such applications do so at their own risk and agree to fully indemnify Dorji Industrial Group for any damages resulting from improper use.</p>
--	---